



POWER AMPLIFIERS



42% INCREASE IN
EFFICIENCY*

40% UP TO
MORE POWER*

58% SMALLER*

45% LONGER
THERMAL TIME*

*T400X4AD compared to T400-4

T400X2AD

200x2 @ 4 ohms
200x2 @ 2 ohms
400x1 @ 4 ohms (bridged)
H 1.6" x W 4.25" x L 7.0"
(MINI chassis)

T400X4AD

100x4 @ 4 ohms
100x4 @ 2 ohms
200x2 @ 4 ohms (bridged)
H 1.6" x W 4.25" x L 8.3"
(COMPACT chassis)

T500X1BR

175x1 @ 4 ohms
300x1 @ 2 ohms
500x1 @ 1 ohm
H 1.6" x W 4.25" x L 8.3"
(COMPACT chassis)

BIRD'S-EYE VIEW

OVERVIEW

The New Power line up of ultra-compact stereo and mono amplifiers are built on high efficiency Class-AD and Class-BR technology. The Class-AD models feature multi-impedance Constant Power, and all models come equipped with input/output clip detection, top mounted controls and dual fan forced induction cooling. Perfect for hybrid, electric, small cars, trucks, motorcycles, and side-by-side UTVs.

HIGHLIGHT REEL

MULTI-APPLICATION USE



Cars



Trucks



Motorcycles



Side x Side

EASY INSTALLATION

C.L.E.A.N. Setup
(Input/Output Clipping Indicators)



Top Mount Controls
Crossover / Input Switch / Level Control / Punch EQ

Punch Level Control-PLC2
(Optional Accessory)



Low pass level control
adjustable from 0 to -20dB.



View INPUT CLIP indicator
remotely.



Removable Connectors
Quick Connect / Disconnect & Wire Management

VEHICLE INTEGRATION

High Level (Speaker)*



OR

Low Level (RCA)*



*Included

Auto Turn-On



*Included

PROPRIETARY TECHNOLOGIES





MARINE AMPLIFIERS



12_v UP TO
INPUT VOLTAGE

1200 WATTS UP TO
RMS POWER
RANGE

5_{CH} NEW
MODEL

1 PURPOSE
BUILT
DESIGN

M400-4D

75x4 @ 4 ohms
100x4 @ 2 ohms
200x2 @ 4 ohms (bridged)
H 2.0" x W 6.8" x L 9.1"
(SMALL chassis)

M600-4D

100x4 @ 4 ohms
150x4 @ 2 ohms
300x2 @ 4 ohms (bridged)
H 2.0" x W 6.8" x L 11.1"
(MEDIUM chassis)

M600-5*

50x4 + 200x1 @ 4 ohms
75x4 + 300x1 @ 2 ohms
H 2.0" x W 6.8" x L 13.2"
(X-LARGE chassis)

M750-1D*

250x1 @ 4 ohms
500x1 @ 2 ohms
750x1 @ 1 ohm
H 2.0" x W 6.8" x L 9.1"
(SMALL chassis)

M1200-1D*

400x1 @ 4 ohms
800x1 @ 2 ohms
1200x1 @ 1 ohm
H 2.0" x W 6.8" x L 11.1"
(MEDIUM chassis)

OVERVIEW

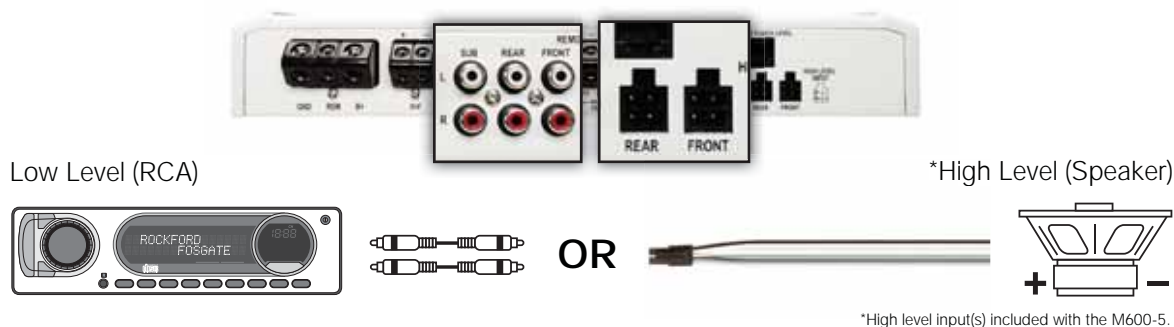
The latest edition to our Marine Grade amplifier line packs plenty of power in a compact package. Designed to amplify your entire system. The M600-5 features independent front, rear, and subwoofer outputs. Whether it's M2 speakers or wake tower cans, shallow subs or M2 subs, the M600-5 powers them all.

HIGHLIGHT REEL

MARINE GRADE 2-PART EPOXY COATED PCB



VEHICLE INTEGRATION



PURPOSE BUILT DESIGN



PROPRIETARY TECHNOLOGIES





RFBTAUX 

5_F_T CORD
LENGTH

 [®] BLUETOOTH[®]
AUDIO
STREAMING

 USB
CHARGING

RFBTAUX

Universal Bluetooth Car Adapter
for Wireless Streaming

BIRD'S-EYE VIEW

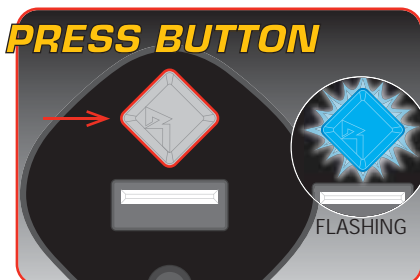
OVERVIEW

The RFBTAUX gives you an easy way to stream media content from your smart phone, tablet, or laptop directly to an AUX input jack. Media content includes your music library and any app that you use (Pandora, Rhapsody, etc). Plug the RFBTAUX in to the radio in your car, truck, boat, or motorcycle. If space is an issue, you could even use a 1/8" to RCA adapter and connect the RFBTAUX directly to the RCA input of Rockford's amplifiers without using a source unit.

HIGHLIGHT REEL

EASY PAIRING WITH BLUETOOTH DEVICES

(Compatible with most BLUETOOTH devices; smartphones, tablets, laptops, etc.)

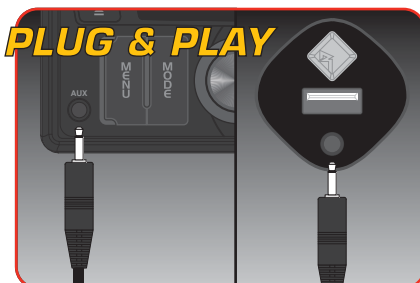


Press the button above the USB slot. Button will flash blue.



Search for device. Select RFBTAUX. Once paired button will be solid blue.

STREAM AUDIO TO ANY SOURCE UNIT THAT HAS AN AUX INPUT



Using supplied cable connect RFBTAUX to AUX jack in vehicle. Select AUX on radio.



Cars



Trucks



Motorcycles

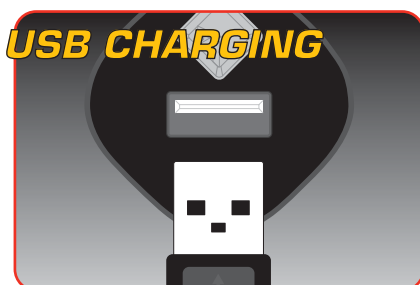


Boats



Side x Side

USB PORT PROVIDED SO YOU CAN CHARGE YOUR PHONE, MP3 PLAYER, TABLET OR OTHER MEDIA DEVICE



USB slot is for charging only. USB cable NOT included.

AUTO CONNECT

Audible chime tells you you're connected.



RFPEQU



3^{IN}1

- PUNCH EQ
- LINE DRIVER
- HIGH TO LOW

10.5_v

RMS
OUTPUT
VOLTAGE

2_{CH}

INPUT/
OUTPUT

OVERVIEW

The RFPEQU, universal Punch EQ, is compatible with any branded aftermarket audio system, adding Rockford's patented Punch EQ bass and treble boost. This adapter features a high-level signal input with auto turn-on capability and adjustable sensitivity to match any audio source. The 2-channel RCA outputs have a built-in line driver allowing the signal to connect to any amplifier's input jacks and overcome any noise.

HIGHLIGHT REEL

VEHICLE INTEGRATION

High Level (Speaker)*



OR

Low Level (RCA)*

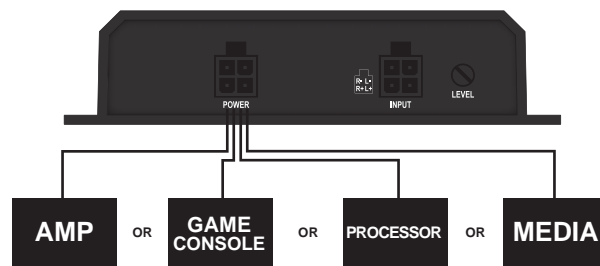
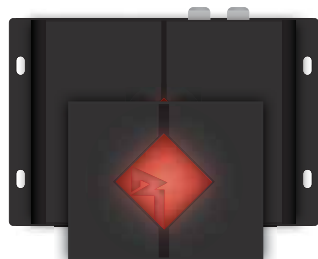


*Included



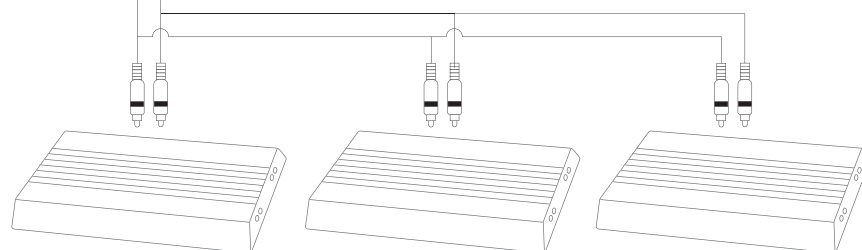
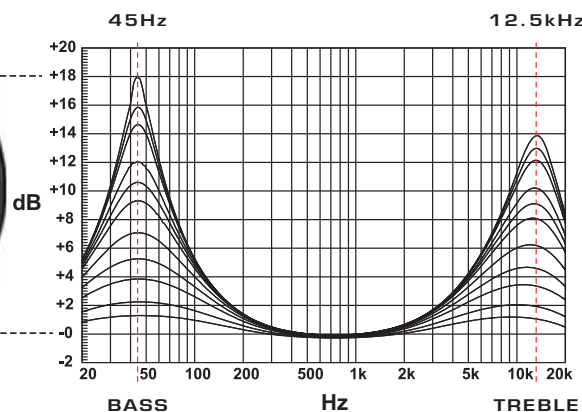
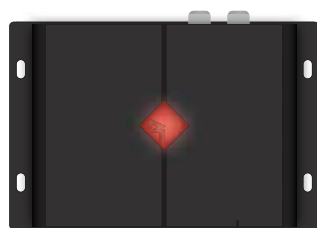
*Included

Auto Turn-On*



*When utilizing high-level for input signal the auto turn-on feature is active and the REM becomes an output.

Universal PEQ / Line Driver





POWER T4 COMPONENTS



150 WATTS RMS
POWER
HANDLING

5 % TOLERANCE PARTS
AUDIOPHILE GRADE
CROSSOVER

3 PROCESS
KLIPPEL
VERIFICATION

T4652-S

6.5" 2-way Component System

Mounting Depth: 2.8"

150 Watts RMS

300 Watts Peak

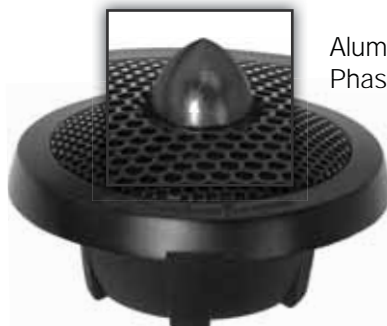
BIRD'S-EYE VIEW

OVERVIEW

The Power T4 6.5" component system mimics the performance of our flagship model but includes a crossover that's effortless to install. The Liquid Crystal Polymer tweeter features a aluminum phase plug that guides high frequency waves toward the listener for an extended frequency response. The woofer features a VAST Butyl Rubber surround to maximize cone area and frequency response. These combined with an asymmetrical 12dB Butterworth crossover offers audiophile sound quality in an efficient 2-way system.

HIGHLIGHT REEL

TWEETER



Aluminum
Phase Plug

LCP (Liquid Crystal Polymer) Fiber Ring Radiator Dome

10x Stronger than
ALUMINUM
w/ Exemplary Vibration Damping



Dual Neodymium Magnet | Low Resonant Chamber | IDHS (Inductive Damping Heat Sink) | DDC (Discreet Dual Clamp)

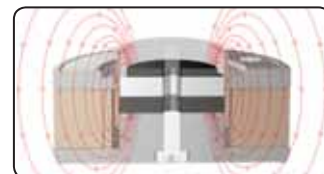
MIDRANGE

Woven LCP (Liquid Crystal Polymer) Fiber Cone

10x Stronger than
ALUMINUM
w/ Exemplary Vibration Damping

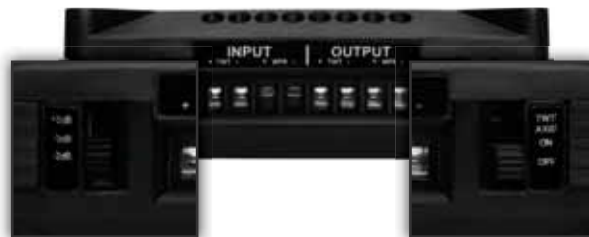


IDHS (Inductive Damping Heat Sink)



Multi-Pole Dual Neodymium Magnet

CROSSOVER



Tweeter Attenuation
+2dB / 0dB / -2dB

Tweeter Axis
On Axis / Off Axis



Bi-Amp Selection

PROPRIETARY TECHNOLOGIES





POWER BMW DIRECT FITMENT SPEAKERS



2004_{&UP}

BMW DIRECT FIT
SPEAKER
SOLUTIONS

3 OEM
FRAME
FITMENTS

**PLUG
&PLAY**

BMW
CONNECTORS

4" COMPONENT
SYSTEMS

T3-BMW1

4" 2-way Component System
OEM Frame Style-1
50 Watts RMS
100 Watts Peak

T3-BMW2

4" 2-way Component System
OEM Frame Style-2
50 Watts RMS
100 Watts Peak

T3-BMW3

4" 2-way Component System
OEM Frame Style-3
50 Watts RMS
100 Watts Peak

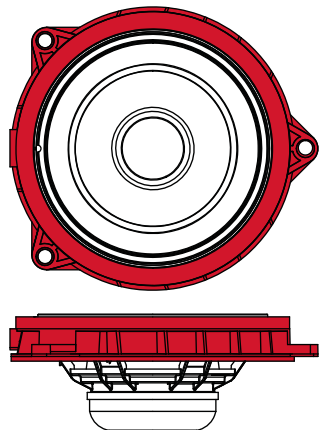
BIRD'S-EYE VIEW

OVERVIEW

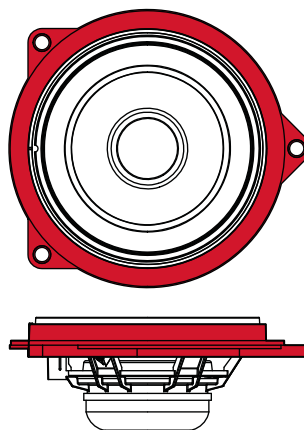
The Power BMW direct fit speakers are intended to replace or upgrade factory models installed in select BMW vehicles. The speaker is comprised of a 1" ceramic-coated tweeter with neodymium motor and a woofer with a tri-laminate injection molded fiber cone. Features an inline passive crossover and BMW factory connector for easy plug-n-play operation. Made in Germany.

HIGHLIGHT REEL

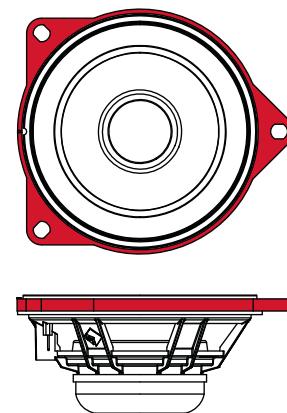
DIRECT FIT DESIGN



BMW1



BMW2



BMW3

MODEL	CHASSIS/ LOCATION	YEAR
1-SERIES	3-Door(F21) / F 5-Door(F20) / F	2011 - Current
3-SERIES	Coupé(F32) / F, R Sedan(F30) / F, R Touring(F31) / F, R	2012 - Current
6-SERIES	Coupé(F13) / F Convertible(F12) / F	2011 - Current
X3	SUV(F25) / F, R	2010 - Current

MODEL	CHASSIS/ LOCATION	YEAR
1-SERIES	Coupé(E82) / F 3-Door(E81) / F 5-Door(E87) / F Convertible(E88) / F	2004 - 2011
3-SERIES	Coupé(E92) / F Sedan(E90) / F, R Touring(E91) / F, R Cabrio(E93) / F	2005 - 2011
5-SERIES	Sedan(F10) / F, R Touring(F11) / F, R	2011 - Current
6-SERIES	Coupé(F13) / R Convertible(F12) / R	2011 - Current
7-SERIES	Limousine(F01) / F, R	2008 - Current
X1	SUV(E84) / F	2009 - 2012

MODEL	CHASSIS/ LOCATION	YEAR
1-SERIES	3-Door(F21) / RWS 5-Door(F20) / RWS	2011 - Current
5-SERIES	Sedan(E60) / F, R Touring(E61) / F, R Sedan(F10) / RWS Touring(F11) / RR	2010 - Current
6-SERIES	Coupé(F13) / RWS	2011 - Current
X1	SUV(E84) / RWS	2009 - 2012
X3	SUV(F25) / C	2010 - Current
X5	SUV(E70) / F, R	2006 - Current
X6	SUV(E71) / F, R	2008 - Current
Z4	Roadster(E89) / F	2009 - Current

F = Front Door, R = Rear Door, RR = Rear Roofliner, RWS = Rear Window Shelf, C = C-Pillar

PROPRIETARY TECHNOLOGIES





PRIME MOTORCYCLE AUDIO SYSTEMS



1998_{&UP}

HARLEY
DAVIDSON
COMPATIBLE

2_{OHM}

OPTIMIZED
IMPEDANCE

2^{OR}**4**

SPEAKER
SYSTEMS

5.25"

OEM FIT
FULL RANGE
COAXIAL

R1-HD2-9813

2-channel Amplified Speaker
System
Harley Davidson 1998-2013

R1-HD4-9813

4-channel Amplified Speaker
System
Harley Davidson 1998-2013

BIRD'S-EYE VIEW

OVERVIEW

The Prime motorcycle audio systems are available in a 2-Channel system or a complete 4-Channel system designed for Harley-Davidson® motorcycles that includes a matched amplifier and speaker set, amp mounting plate, and wiring harness.

HIGHLIGHT REEL

DIRECT FIT DESIGN



Street Glide®



Electra Glide®



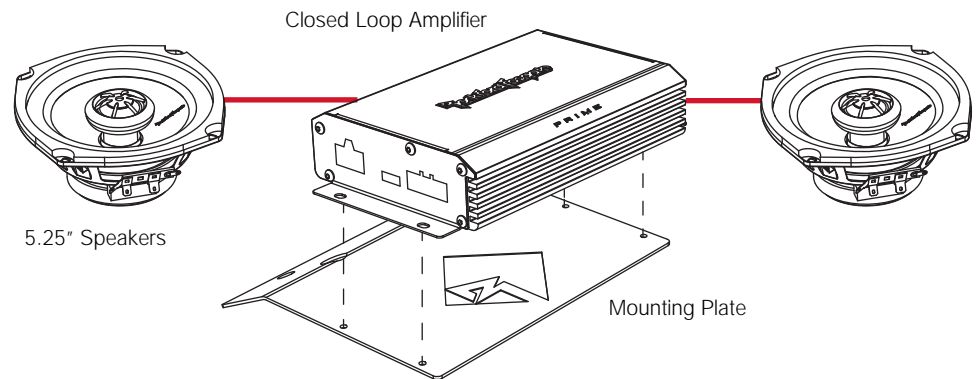
Ultra®

1998

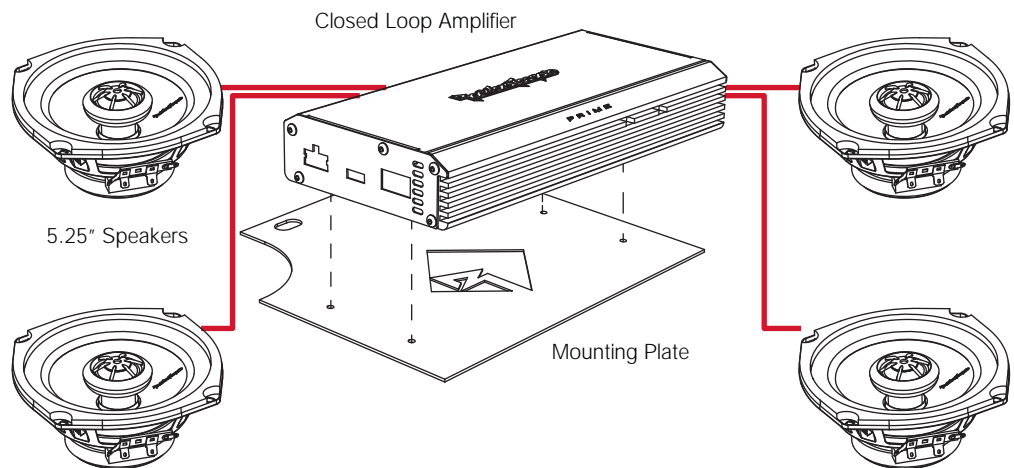


2013

2-Channel Solution*



4-Channel Solution*



*Plug and Play wiring harness included.

PROPRIETARY TECHNOLOGIES





R1 PRIME SUBWOOFERS



2" VOICE
COIL

.5-1.8 FEET³ SEALED
ENCLOSURE
RANGE

1.4/1.8 FEET³ VENTED
ENCLOSURE
RANGE

200 WATTS RMS
POWER
HANDLING

R1S4-10

4 Ohm SVC 10" Subwoofer
Mounting Depth: 4.4"
200 Watts RMS
400 Watts Peak

R1S4-12

4 Ohm SVC 10" Subwoofer
Mounting Depth: 4.9"
200 Watts RMS
400 Watts Peak

R1-1X10

Single 10" Sealed Enclosure
H12.2" x W15.9" x L12.1"
200 Watts RMS
400 Watts Peak

R1-2X10

Dual 10" Sealed Enclosure
H12.2" x W30.1" x L12.1"
400 Watts RMS
800 Watts Peak

R1-1X12

Single 12" Sealed Enclosure
H14.4" x W17.7" x L12.5"
200 Watts RMS
400 Watts Peak

R1-2X12

Dual 12" Sealed Enclosure
H14.4" x W34.1" x L12.5"
400 Watts RMS
800 Watts Peak

BIRD'S-EYE VIEW

OVERVIEW

Rockford Fosgate Prime R1 subwoofers provide high performance bass at an unbelievable value. Featuring an aluminum curvilinear dust-cap to dissipate heat generated by the higher power handling as well as a solid stamped steel frame and integrated frame mounted compression terminals. Best of all, they are optimized for both sealed and vented enclosures.

HIGHLIGHT REEL

DESIGN FEATURES



OPTIONAL LOADED ENCLOSURE

Available for all 10" or 12" PRIME R1 subwoofers in single or dual configuration.



PROPRIETARY TECHNOLOGIES

